

Paint Removal from Metal

Global Advantech GreenChem's Ultra-Green Paint Remover Gel CM707 is a **non-hazardous, environmentally-safe**, high performance paint remover. It is safe, non-toxic and contains only fully biodegradable components that do not accumulate in the environment.

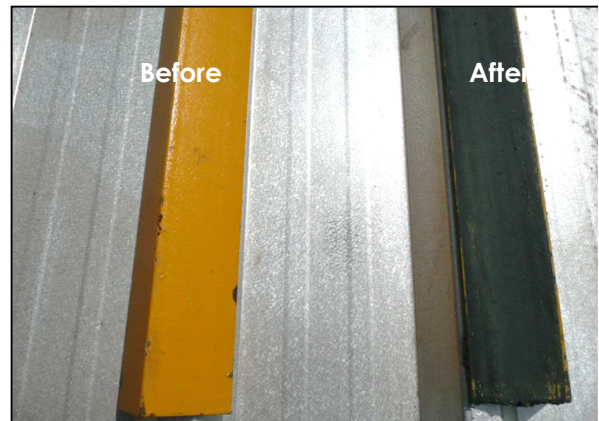
CM707 is formulated to remove most types of paint from all surfaces, with the exception of perspex (polymethyl methacrylate) and polycarbonates (Plastic-Safe Paint Remover CM708 is recommended for these plastics).

The effectiveness of Global Advantech GreenChem's Ultra-Green Paint Remover Gel CM707 to remove industrial coatings from steel was demonstrated on painted metal safety bars and a shipping container with 10 layers of protective paint.

Ultra-Green Paint Remover Gel CM707 was applied to the painted metal bars and a container door with a brush and left for 10 minutes for the paint to soften. A scraper and stiff brush were then used to remove the softened paint from the bars and container door, much of which came off in strips.

The metal safety bars required one application of CM707 to completely remove the paint.

Three layers of paint were removed from



the container door with the first application of CM707; the layers of paint had softened and came off with the scraper in strips. It was necessary to make two more applications with the CM707 and to remove all the layers of paint from the container door.

The trial results are shown in the two photographs with bare metal revealed after treatment with CM707.



Global Advantech GreenChem Limited

Exceptional clean technologies for a sustainable future.....

Energy House, 14 Maurice Close, Kimbolton, Cambridgeshire, PE28 0HD, United Kingdom
 † +44 (0)845 519 0159 / e enquiries@ga-greenchem.com / www.ga-greenchem.com